

RCCB, 2-pole, type A, short- time delayed, In: 25 A, 300 mA, Un AC: 230 V



Model	
Product brand name	SENTRON
Product designation	RCCB
Design of the product	Short-time delayed
General technical data	
Number of poles	2
Size of installation devices / acc. to DIN 43880	1
Protection against electrical shock	Finger and back-of-hand safe
Short-circuit current rating	10 kA
circuit-breaker / Design	5SV3
Mechanical service life (switching cycles) / typical	10 000
Switching function / short-term delayed	Yes
Overvoltage category	III
Supply voltage	
Supply voltage	
• at AC / rated value	230 V
• for testing equipment / minimum	100 V
Supply voltage frequency	

• rated value	50 Hz
<b>Protection class</b>	
<b>Protection class IP</b>	IP20, if the distribution board is installed, with connected conductors
<b>Switching capacity</b>	
Switching capacity current / according to IEC 61008-1 / rated value	0.5 kA
<b>Dissipation</b>	
<b>Power loss [W]</b>	0.5 W
• for rated value of the current / at AC / in hot operating state / per pole	
<b>Electricity</b>	
<b>Tripping residual current / rated value</b>	300 mA
rated current $I_n$ / IEC, DIN/VDE / at 40 Cel	25 A
<b>Type of fault current</b>	A
Current / at AC / rated value	25 A
<b>I<sup>2</sup>t-value / permissible</b>	15 620 A <sup>2</sup> ·s
Surge current resistance / rated value	3 kA
<b>Operating frequency</b>	50/60Hz
<b>Product details</b>	
Product feature / silicon-free	Yes
Product extension / can be installed / supplementary devices	Yes
<b>Number</b>	
<b>Number of test cycles / for environmental testing / acc. to IEC 60068-2-30</b>	28
<b>Connections</b>	
<b>Connectable conductor cross-section / stranded</b>	
• minimum	0.75 mm <sup>2</sup>
• maximum	35 mm <sup>2</sup>
<b>Connectable conductor cross-section / solid</b>	
• minimum	0.75 mm <sup>2</sup>
• maximum	35 mm <sup>2</sup>
<b>Tightening torque / with screw-type terminals</b>	
• minimum	2.5 N·m
• maximum	3 N·m
Position / of power supply cord	top or bottom
<b>Mechanical Design</b>	
<b>Height</b>	90 mm
<b>Width</b>	36 mm

Depth	70 mm
Mounting position	any
Installation depth	70 mm
Number of width units	2
Mounting type	DIN rail (REG)
Net weight	200 g

### Environmental conditions

#### Ambient temperature

- minimum -25 °C
- maximum 45 °C
- during storage / minimum permissible -40 °C
- during storage / maximum permissible 75 °C

### Certificates

#### Equipment marking

- acc. to DIN EN 61346-2 F
- acc. to DIN EN 81346-2 F

### General Product Approval

### Declaration of Conformity



CCC



ÖVE



VDE

[Miscellaneous](#)



EG-Konf.

### Further information

#### Information- and Downloadcenter (Catalogs, Brochures,...)

<http://www.siemens.com/lowvoltage/catalogs>

#### Industry Mall (Online ordering system)

<https://mall.industry.siemens.com/mall/en/en/Catalog/product?mlfb=5SV3612-6KK01>

#### Service&Support (Manuals, Certificates, Characteristics, FAQs,...)

<https://support.industry.siemens.com/cs/ww/en/ps/5SV3612-6KK01>

#### Image database (product images, 2D dimension drawings, 3D models, device circuit diagrams, ...)

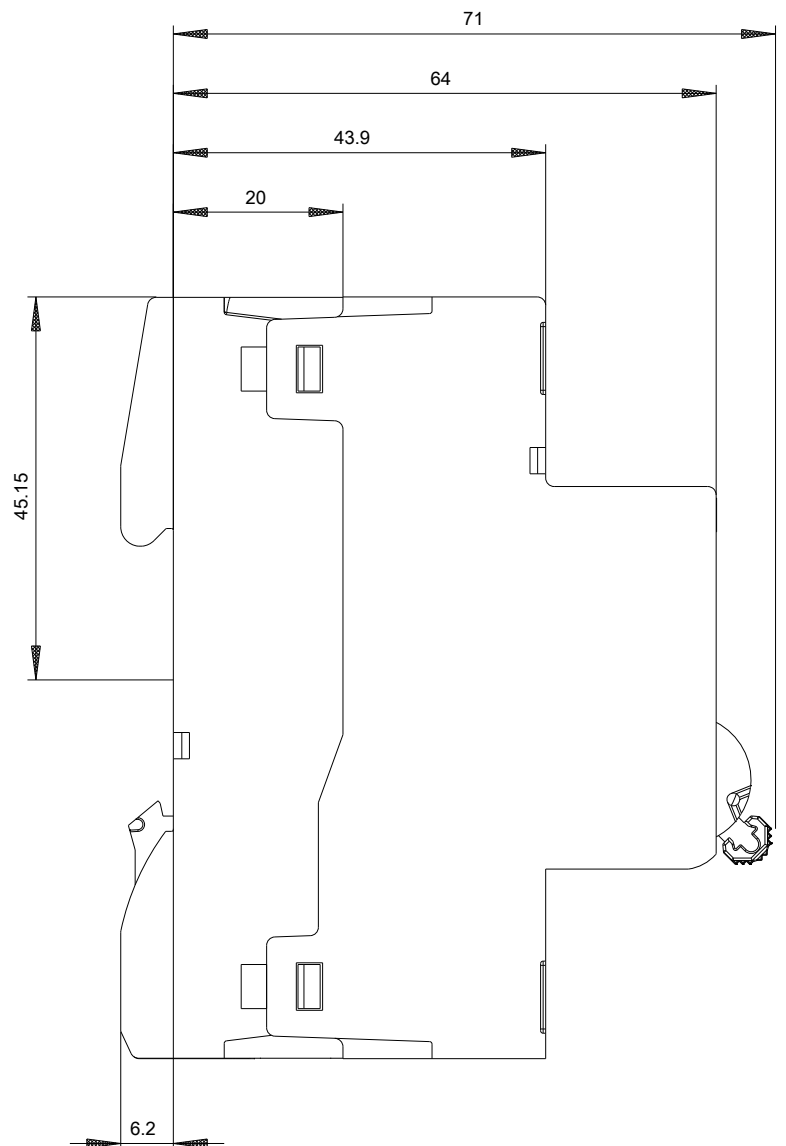
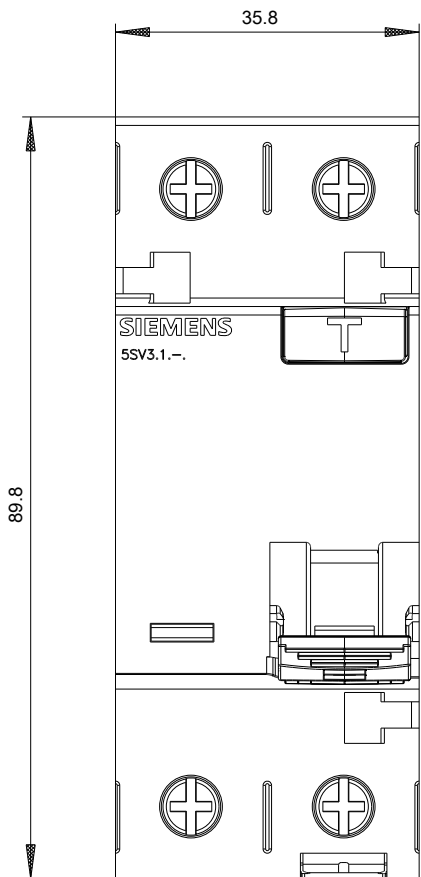
[http://www.automation.siemens.com/bilddb/cax\\_en.aspx?mlfb=5SV3612-6KK01](http://www.automation.siemens.com/bilddb/cax_en.aspx?mlfb=5SV3612-6KK01)

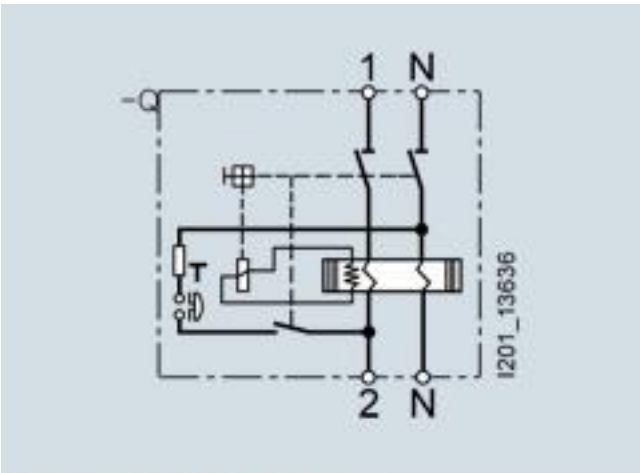
#### CAX-Online-Generator

<http://www.siemens.com/cax>

#### Tender specifications

<http://www.siemens.com/specifications>





Internal circuit diagram IEC